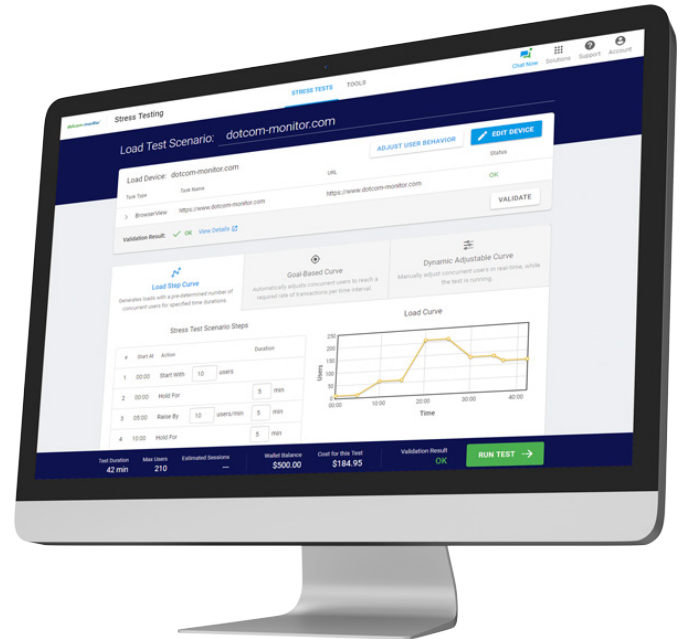


# Cloud-Based Load Testing in Real Browsers

LoadView empowers DevOps teams to stress test their **websites, web-apps, and APIs** with thousands of concurrent connections in real browsers from a fully managed cloud.



## Websites

Test the limits of your web pages with real browsers from multiple locations around the world.



## Web Applications

Design multiple test scenarios for today's most complex web applications.



## Web Services/APIs

Test RESTful, SOAP, and APIs and Web APIs that require authentication or multi-step execution.



## Streaming Media

Test video and audio streams to uncover potential performance, latency, and connection errors.



## Postman Collections

Import Postman collections and quickly set up load tests to observe API behavior under load.

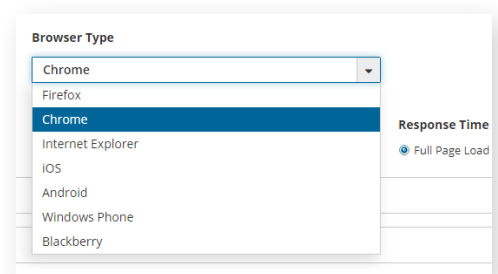


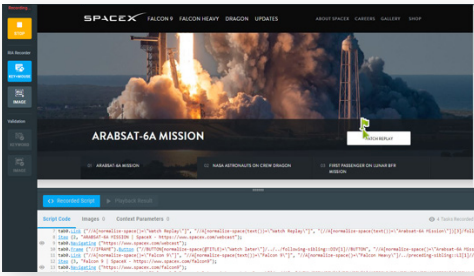
## JMeter Scripts

Upload JMeter scripts and execute large-scale load tests from a fully managed cloud network.

## Cloud-Based Load Testing in Real Browsers

Many of the performance testing tools on the market today, such as Phantom.js, simply emulate a browser using a headless application. One of the unique features of LoadView is the ability to run load tests in real browsers, giving you true performance into how your websites and applications perform under heavy load in real browsers.



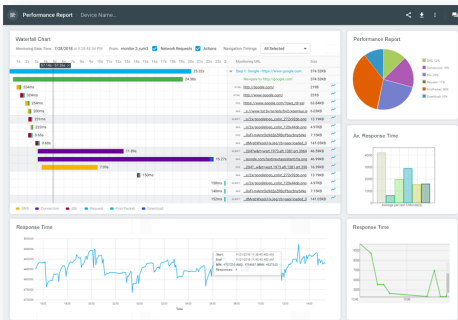


## Point and Click Scripting Tool

Easily create multi-step scripts with the EveryStep Web Recorder. With support for over 40 desktop/mobile browsers and devices, and Rich Internet Applications (RIA) such as AJAX, JavaScript, HTML5, Flash, Silverlight, and Ruby, you can move and click through your site, simulating real user behavior.

## Global, Distributed Load Testing

To ensure your website and applications are performing as expected in multiple geographic locations, you have to perform load tests directly from those locations. LoadView utilizes Amazon Web Services and Azure Cloud Services servers located in over 40 zones throughout the United States, Canada, APAC, South America, and Europe.



## Comprehensive Performance Metrics

Once your load test has finished, you will receive an automatically generated performance report with complete and detailed test results. The report provides an overview of the session, along with relevant performance metrics such as average and maximum response times, errors and error types, number of sessions, video capture, and waterfall charts to dive deeper into individual elements.

## Enterprise Features

- ✓ Departments /Sub Accounts
- ✓ SSO Authentication
- ✓ Manage User Access
- ✓ Flexible Invoicing
- ✓ Professional Migration
- ✓ Account History Auditing
- ✓ Priority 24/7 Support
- ✓ Professional Services

 888-479-0741

 sales@loadview-testing.com

 [www.loadview-testing.com](http://www.loadview-testing.com)

 [www.loadview-testing.com/demo](http://www.loadview-testing.com/demo)

**loadview**  
by dotcom-monitor